

Editing Images – Adobe Lightroom

Part One

By Dave Lloyd

eyemindsoul.blogspot.com

This is simply an overview of using some of the adjustment tools in Adobe Lightroom. For the purposes of this exercise, I am using Lightroom 3.4.

There are two parts to this tutorial. The first part shows some simple and basic steps for editing an image and the second part covers a few other tool functions.

Below, are some screen-shots showing Lightroom in operation.

Note : This guide is not meant to be exhaustive It is simply to show the processes involved.

Image 1 - This first image shows Lightroom once opened. I simply click the check-box of the image I wish to edit and then select Import at lower right. In this case, I am editing a Raw file but the same would apply if it were a Jpeg.

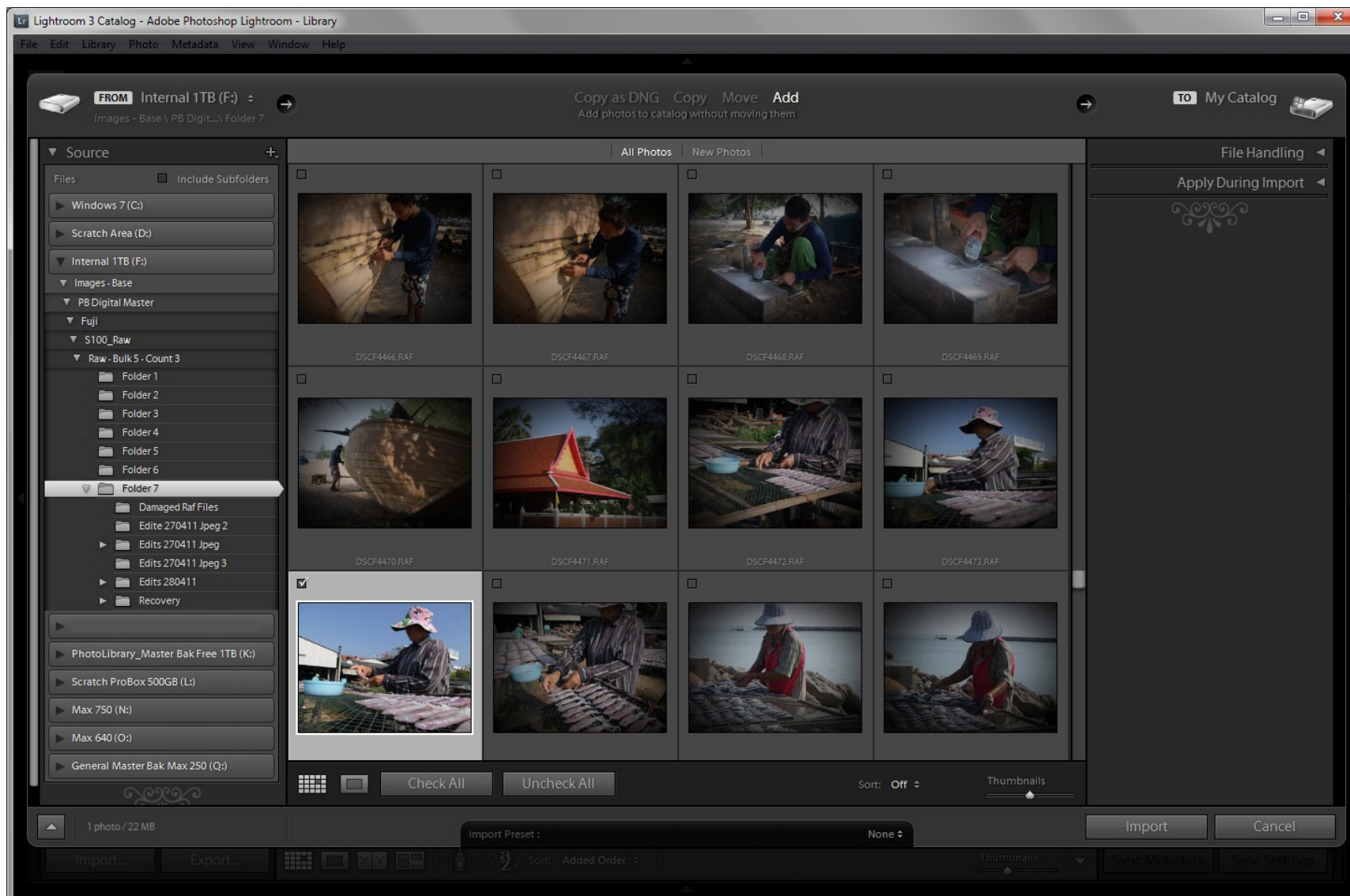


Image 2 – Once imported, the next screen is a Quick Develop screen. I do not wish to use this and instead click Develop at upper right.



Image 3 – Once the Develop screen is open, it presents me with many adjustment options, at right. It also presents many preset adjustments, at left. For my purposes, I will click the small arrow at left of the presets, to hide them.



Image 4 – With the presets closed, I have now clicked on the Y|Y button at the bottom of the screen. This gives a before/after view as adjustments are made. I am simply showing it for illustration purposes and will stay with single image view for the remainder of the exercise.

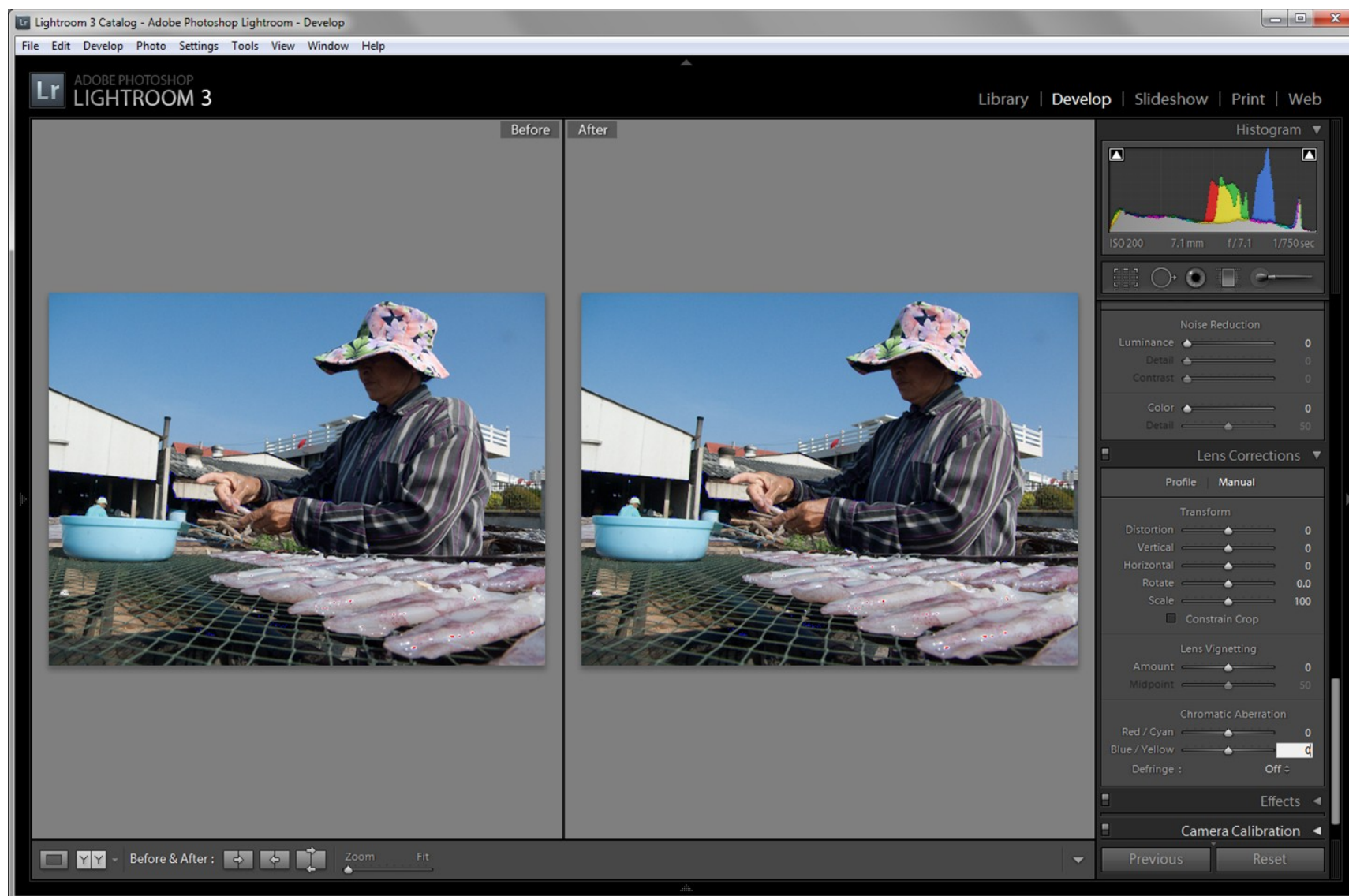


Image 5 – I have now clicked on the image to view it at 100% view, and also selected the Lens Corrections pane, at right. This particular lens suffers some chromatic aberration (CA) and I wish to correct it.

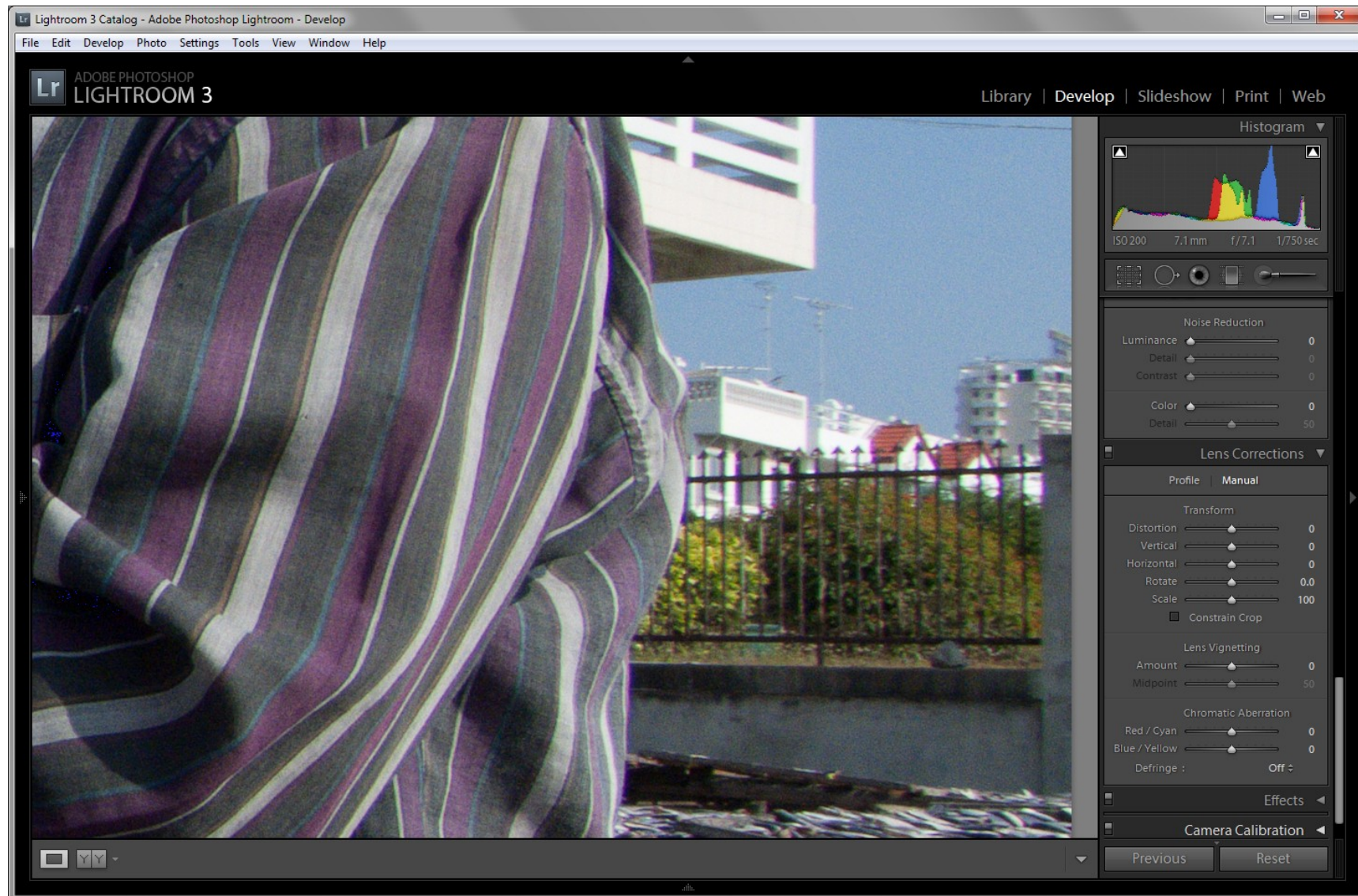


Image 6 – There are many automated lens correction profiles for Lightroom but not for this camera/lens. So, I need to adjust manually. The settings I have applied here are Red/Cyan -35 and Blue/Yellow +35. I have also selected Defringe : All Edges.

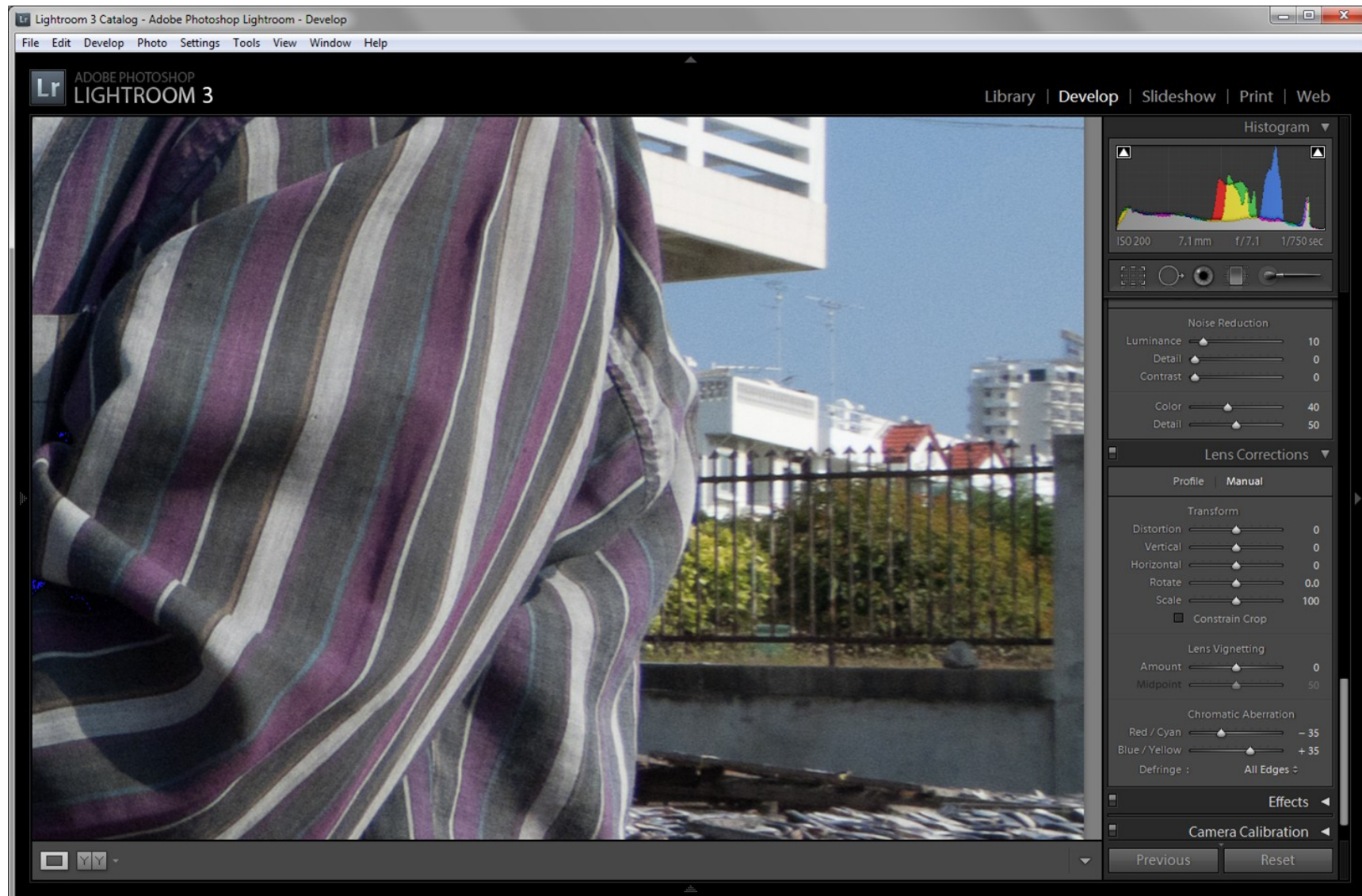


Image 7 – With my CA now corrected, I wish to make adjustments to the exposure, brightness, contrast, etc. Note on the Histogram that the two boxes in the upper corners are checked. This will then give shadow/highlight warnings on the image. These show up as bright blue (shadows) and bright red (highlights). You can see some small bright red areas on the foreground fish, indicating the highlights are 'blown'.



Image 8 – Here, I have done the following : WB 4650 (was 4700), Exposure -0.25, Recovery +35, Fill Light +10, Contrast +35 (default was 25), Clarity +15, Vibrance +15. These steps will adjust the colour slightly and lift shadow detail whilst retaining highlight detail.



Image 9 – Next, I wish to apply a small amount of sharpening and have again enlarged my image for a closer view. This view is showing the Lightroom Sharpening default values of Amount 25, Radius 1.0, Detail 25, Masking 0.



Image 10 – My new values are Amount 100, Radius 0.5, Detail 15 and Masking 15. For me, this is a fairly standard setting and is just a slight sharpening adjustment. Note - I have also applied a small amount of noise reduction here. With any of these settings, it is always best to experiment a little to see what works best for you.

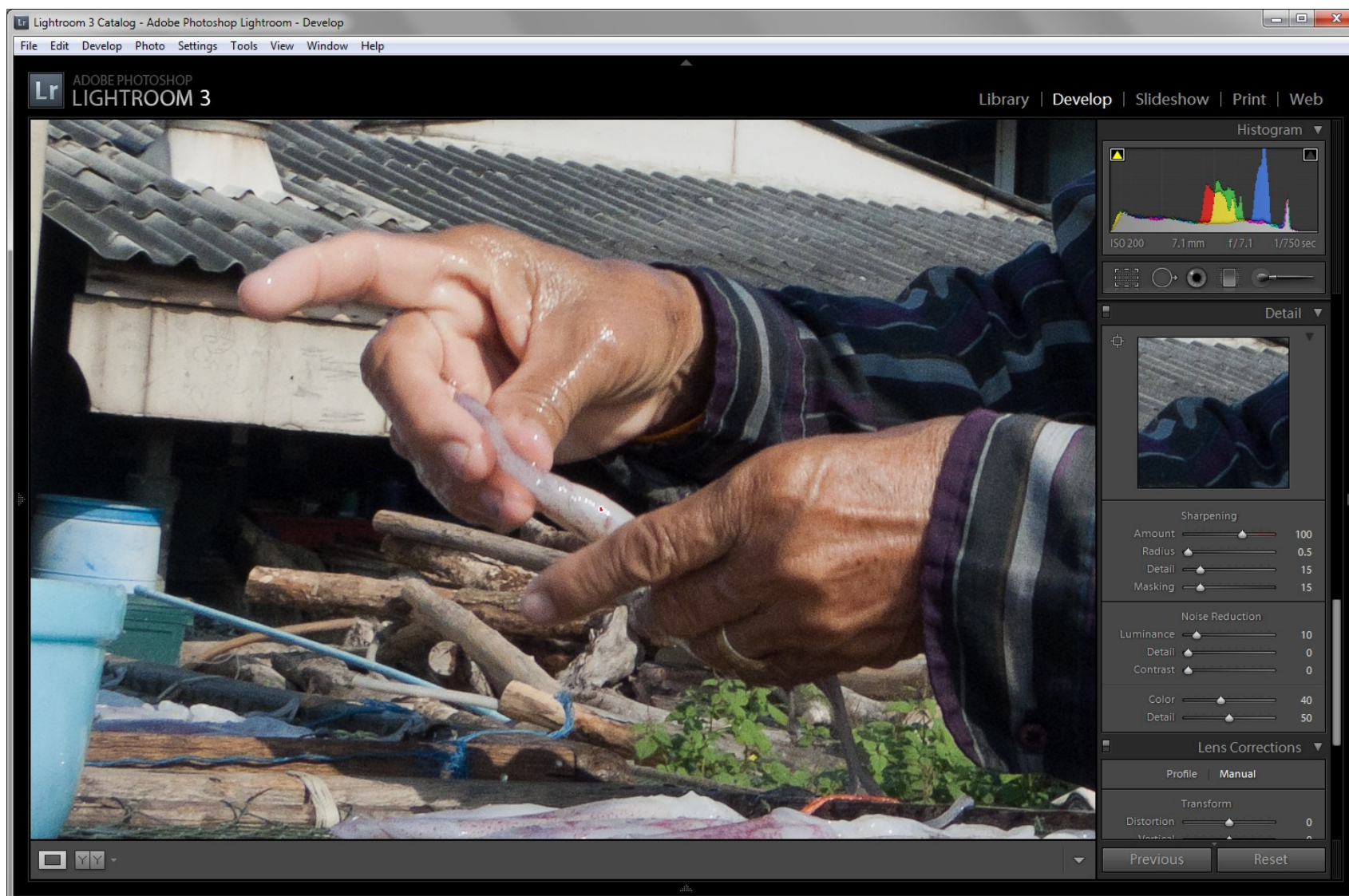


Image 11 – With those basic adjustments done, I now wish to save my image. To do this, I click File/Export.

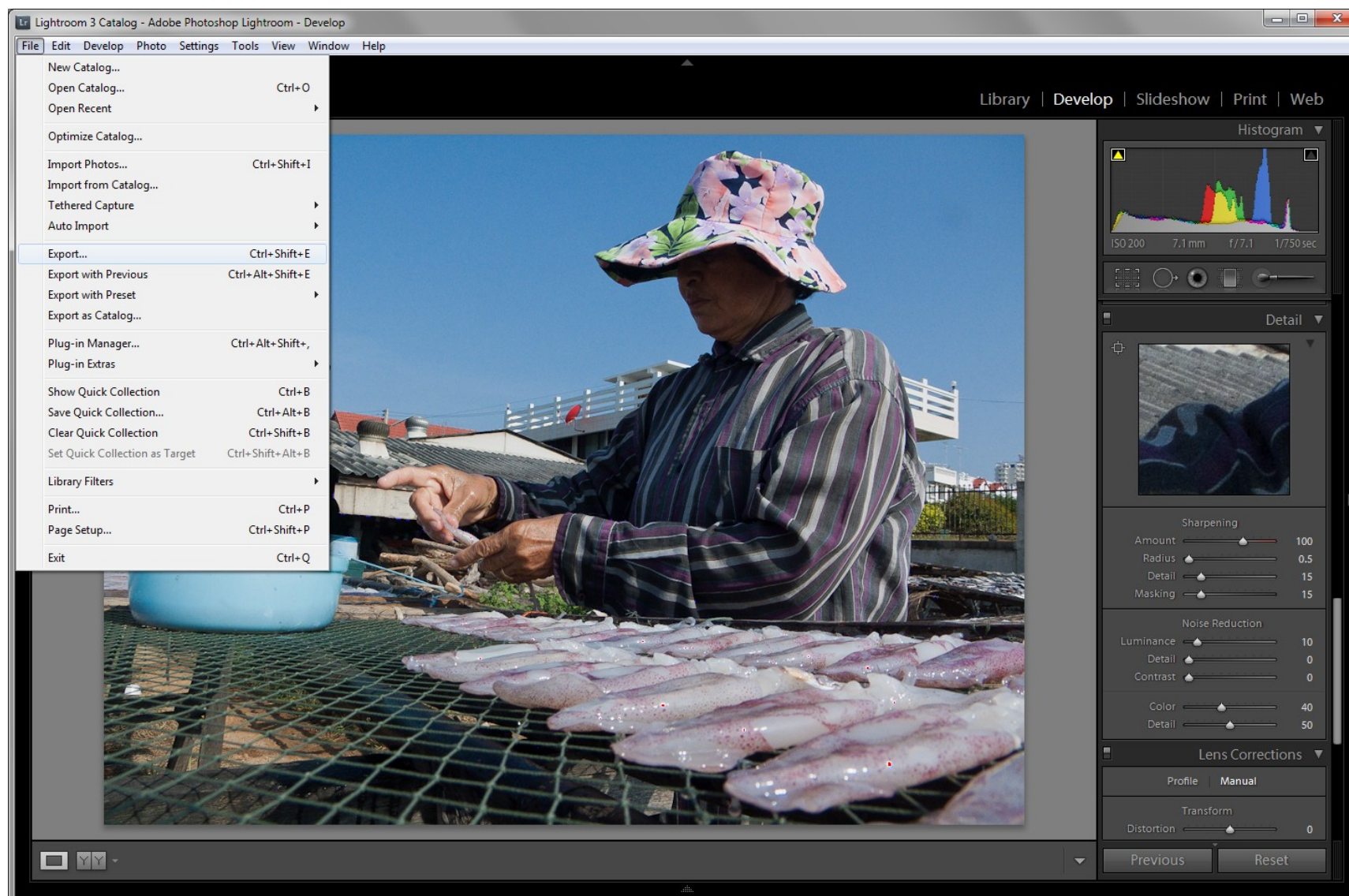


Image 12 – When Export is clicked, a new dialogue pane opens. Here, I have selected to simply append a '1' to the image name and elected to save it as a Jpeg file, and in a sub-folder of the original file location.

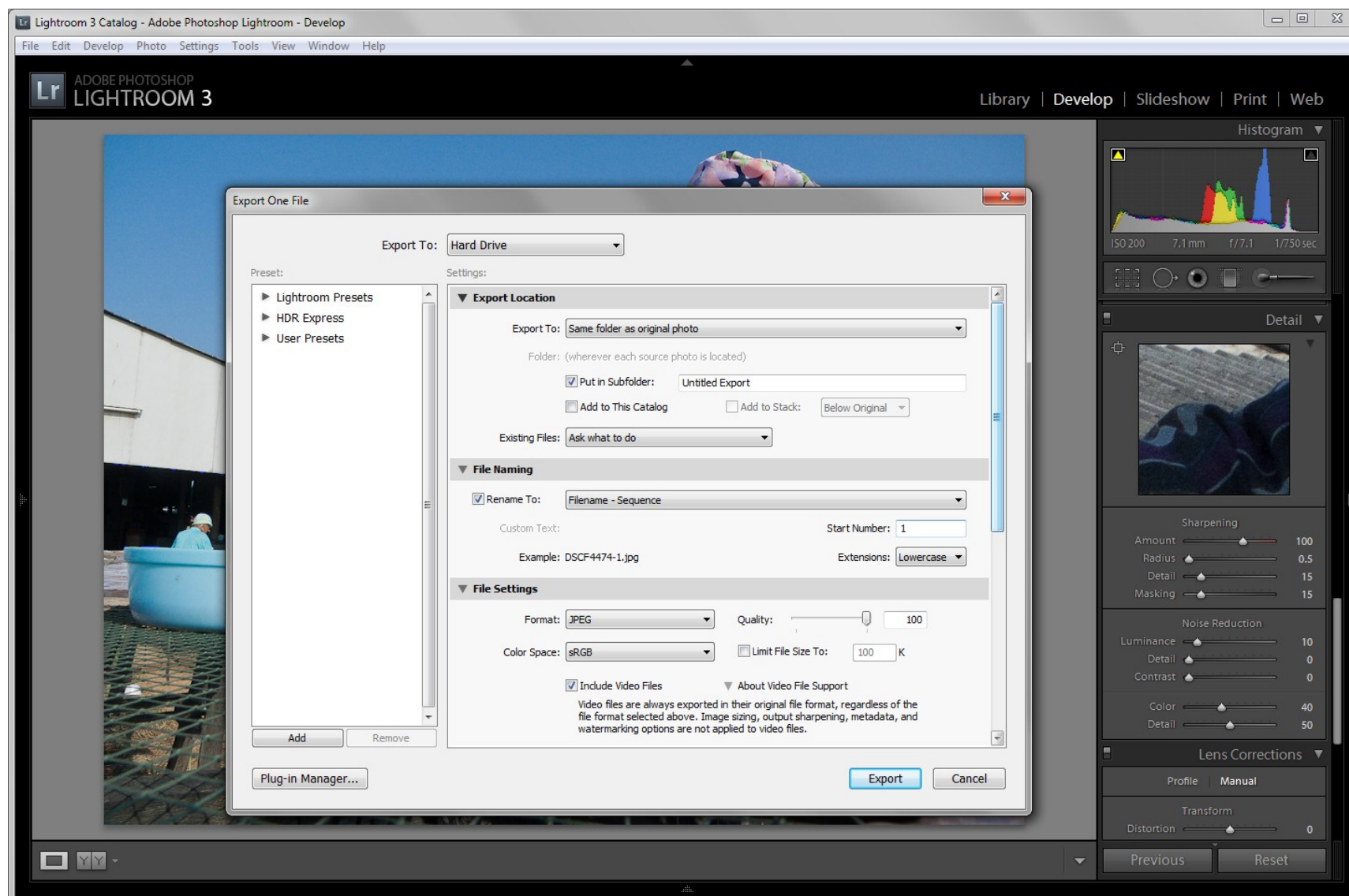


Image 13 – This simply shows a comparison view between the original image at left, and the adjusted image, at right.

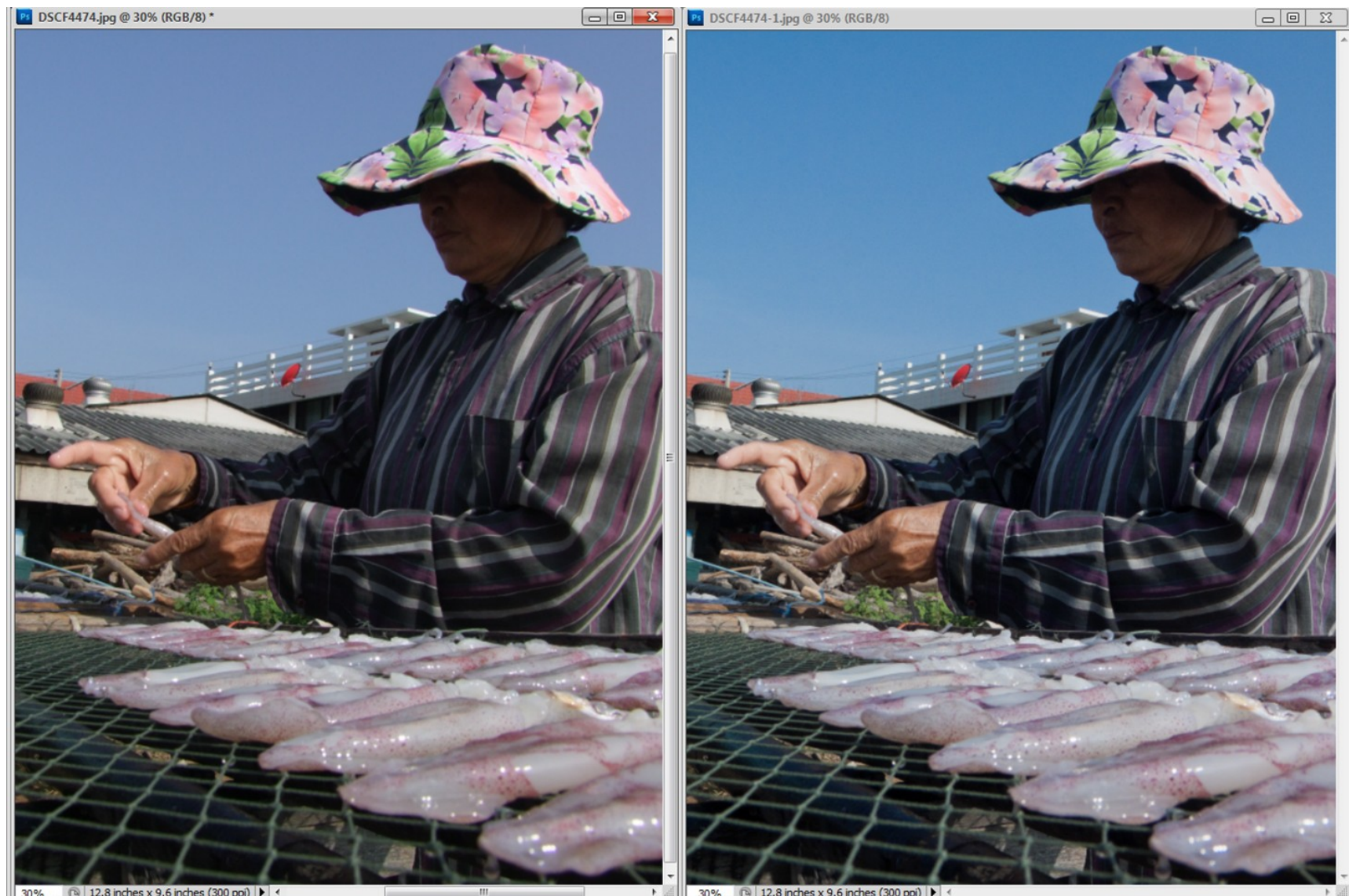


Image 14 – The original image.



Image 15 – The adjusted image.



That's all.

As you go through the steps, make sure you experiment with different values – It's the best way to learn.

Hope you find this helpful. Have fun.

Cheers

...

For part two – Please click [here](#)