

Editing Images With Provia Curve And Sharpener

By Dave Lloyd

eyemindsoul.blogspot.com

This is simply an overview of using a Photoshop action which I use quite often. The action consists of a Provia curve and also employs my sharpening routine action.

The action and curves presets are available [here](#)

Once downloaded, copy the action to the Photoshop/Presets/Actions folder, and the curves to the Photoshop/Presets/Curves folder.

When Photoshop is opened, the curves can be loaded from the Adjustments/Curves Presets pane, if you wish to use the curves without the sharpening action, and the action loaded from the Actions pane.

There are three curves available - Portraesque, Proviaesque and Velviaesque. I did not write them and you can visit the original site for more explanation by clicking [here](#)

Scroll down to the bottom of the page and you can see where the curve pre-sets came from. There is also a set available for use in Gimp and Digikam.

The action I have written simply utilises the Provia curve and is called 'Provia + DLSharp 2'.

Below, are some screen-shots of the action in use.

Note : This guide is not meant to be exhaustive It is simply to show the action process.

Image 1 - This first image simply shows the original image which I wish to run the action on. This was shot with a Nikon D100 and with the 12-24 mm lens. Hence, the wide, and a little distorted, effect.



Image 2 - This screen shot simply shows the original image opened in Photoshop, and how I have my Photoshop screen set up. The action I wish to run is called 'Provia + DLSharp 2'.

Note : The action will change the image colours, add contrast and amplify noise, if it is present. Here, I have not done any pre-steps before running the action, but sometimes a little pre-lightening and noise control is warranted.

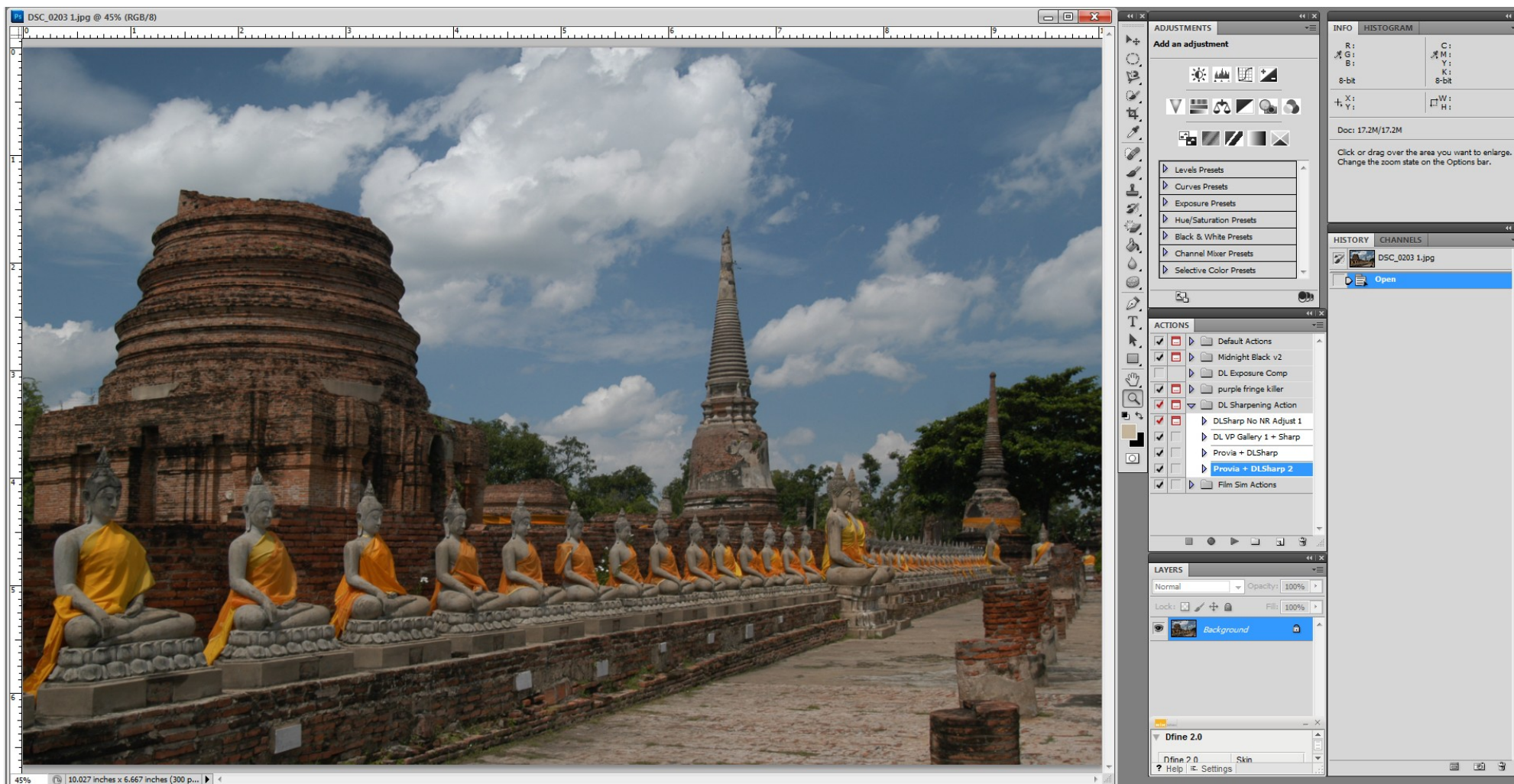


Image 3 - Once the action starts running, a dialogue box will open on two occasions. The first time it opens, simply select Styles/Blending Options:Custom, Blend Mode:Normal and then click OK. There is no need to change the Opacity setting from 50%, unless you wish to.

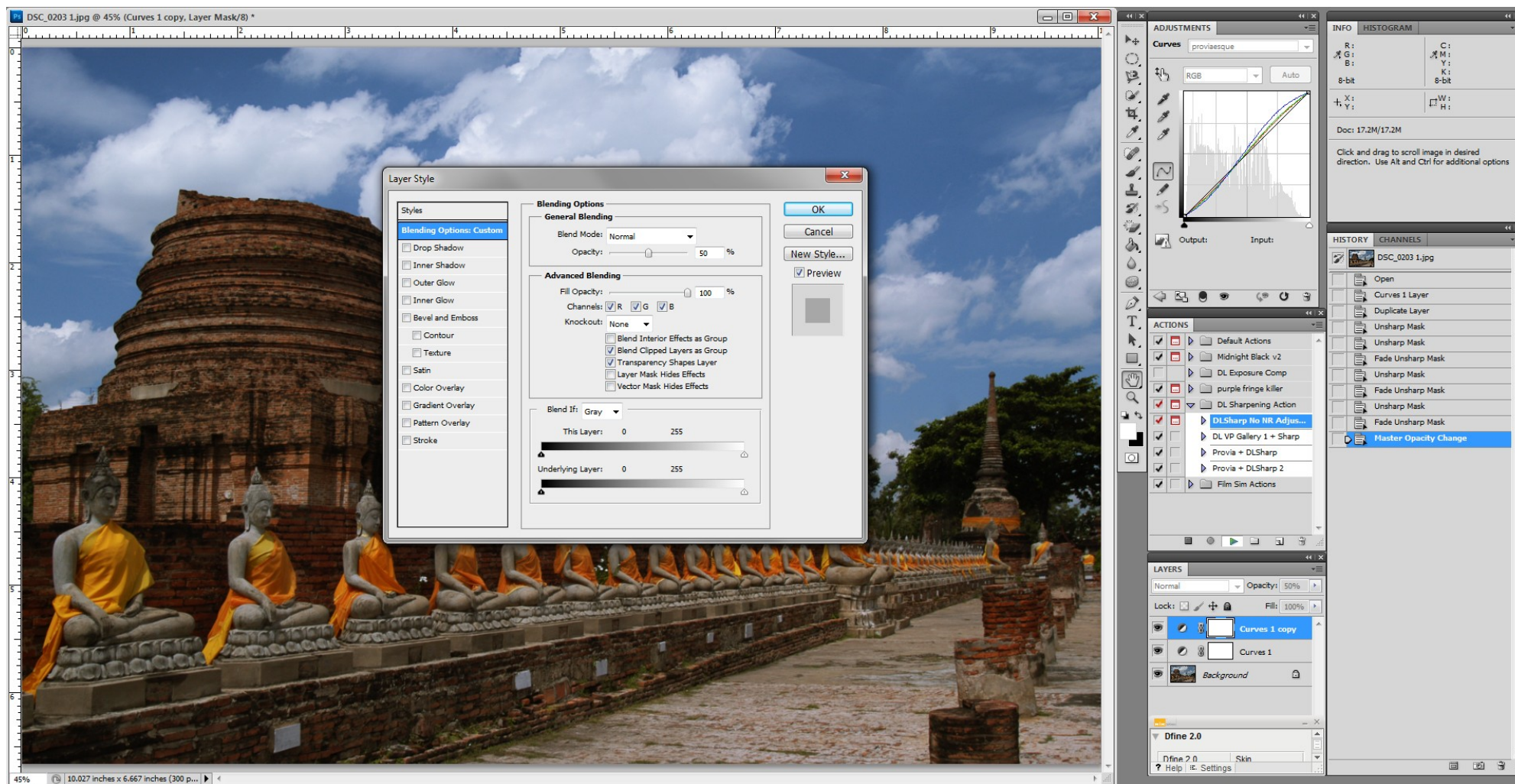


Image 4 - The second time the dialogue box opens, follow the same steps but adjust the Opacity, if desired. Here, I have adjusted the Opacity to 70%.

Note : As mentioned prior, the action will amplify noise, if it is present. Usually when I run the action I do so with the image viewed at 50%, or greater, so that I can see the effect my Opacity adjustment is having on my image.

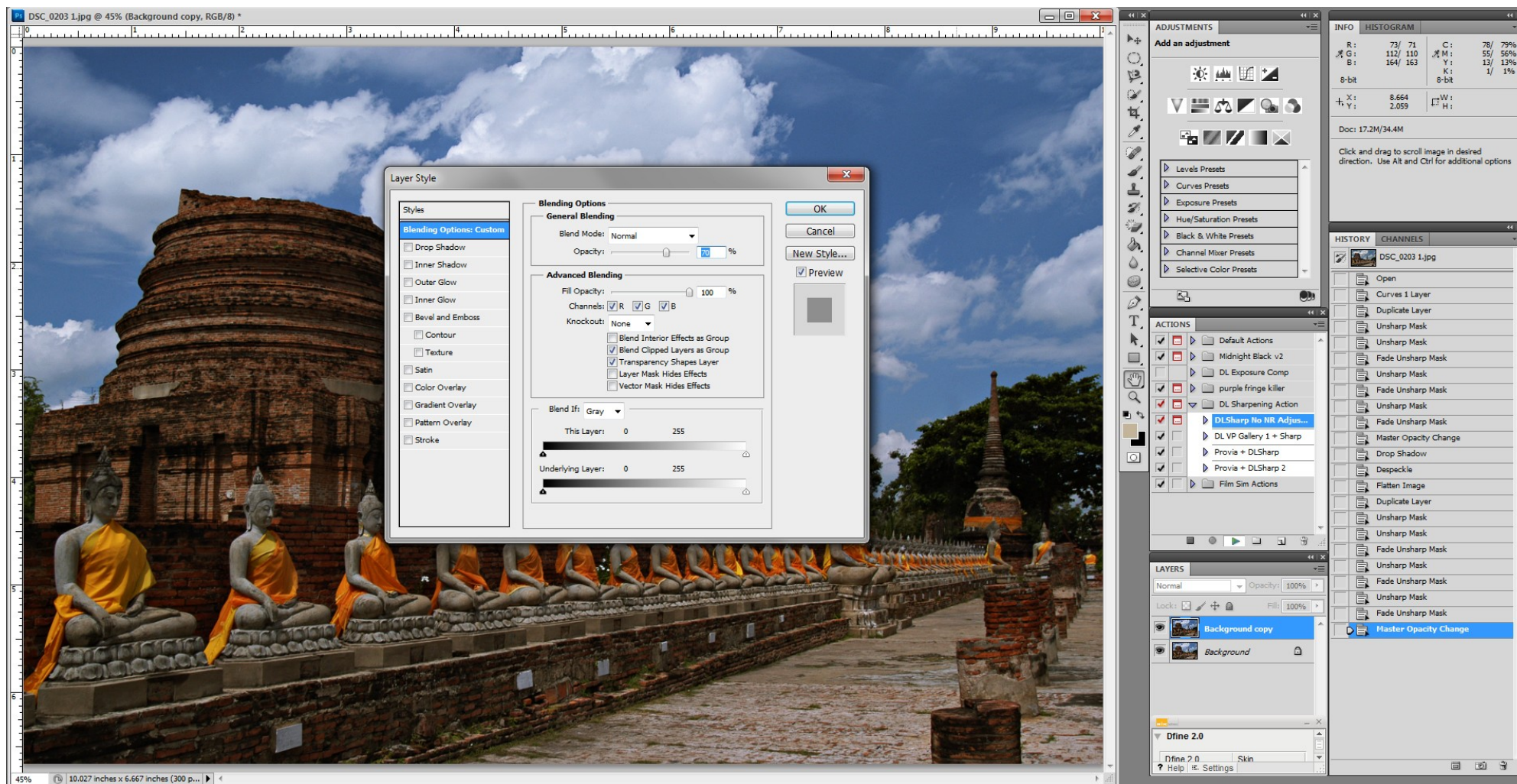


Image 5 - The last two steps of the action adjust Shadows/Highlights levels and also apply some Levels adjustments. Here is the image after the action has completed.

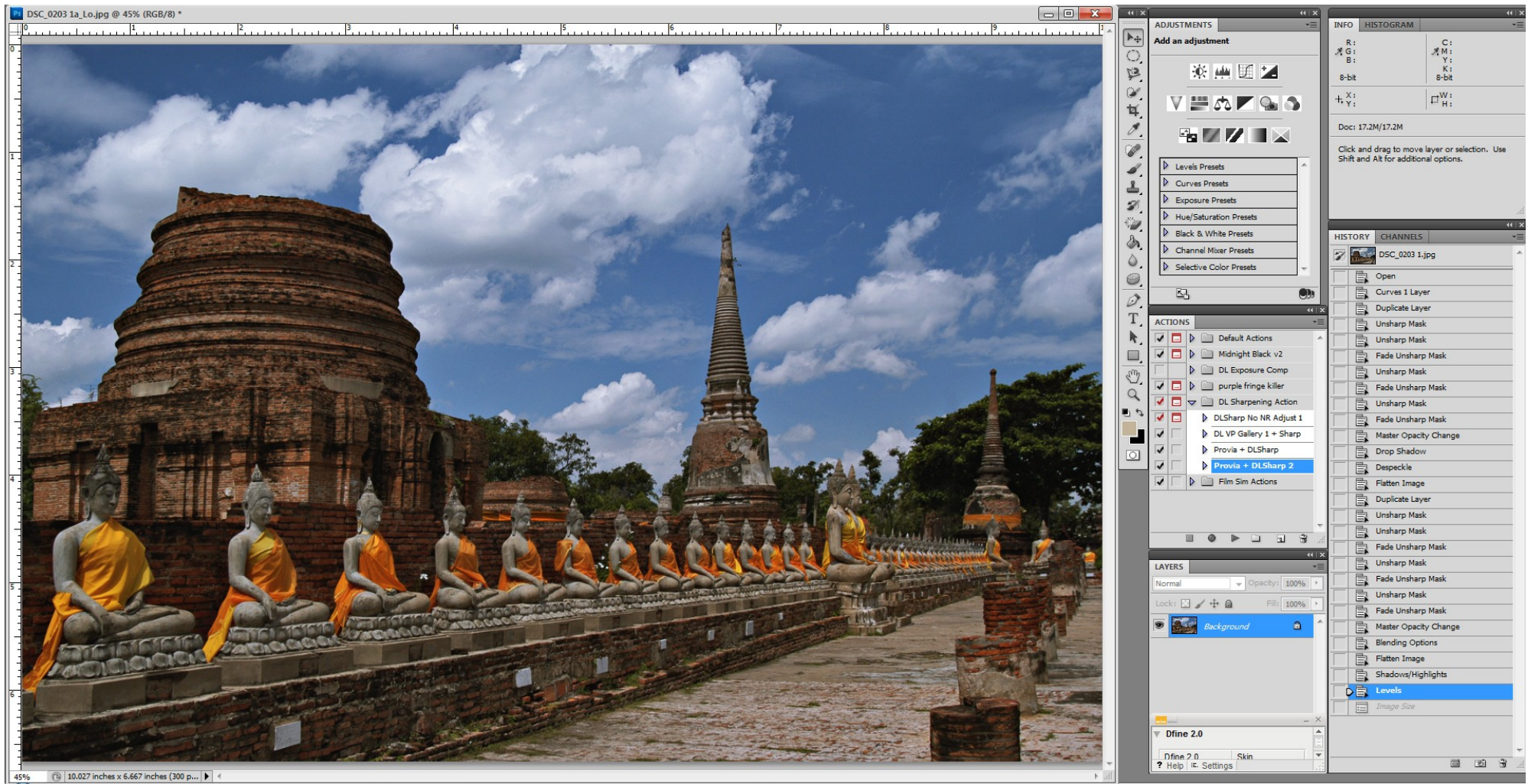


Image 6 - The original image.



Image 7 - The finished image.



That's all.

Hope you find this helpful. Have fun.

Cheers

...